

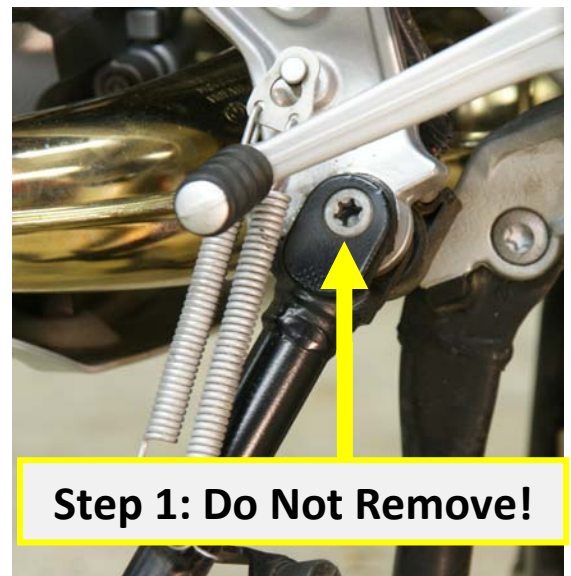
!ALWAYS WEAR SAFETY GLASSES!

Step 1:

Put Bike on Center Stand

But:

**DO NOT REMOVE
THIS BOLT YET!**

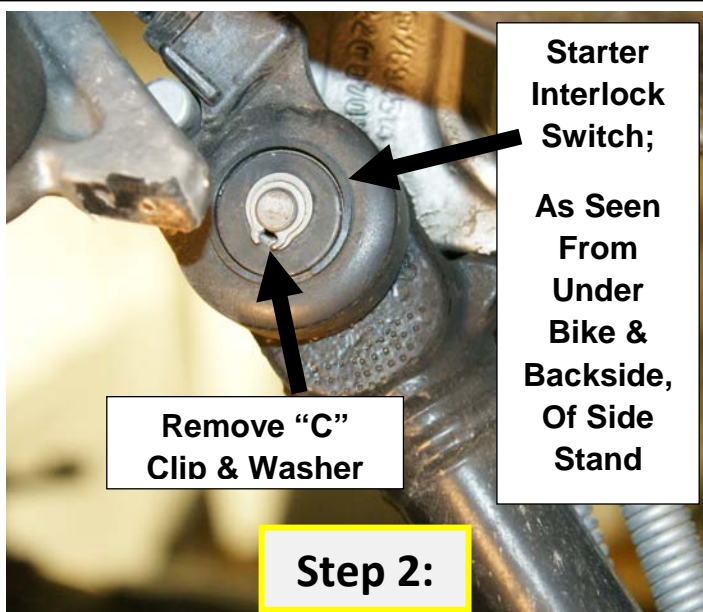


Step 1: Do Not Remove!

Step 2: Un-Clip Starter Interlock Switch

(If So Equipped)

It's Located on the Backside Of Side Stand attached to the back side of the bolt shown in STEP 1. Remove small "C" Clip & Washer Attached to the Bolt as shown below.



**Remove "C"
Clip & Washer**

**Starter
Interlock
Switch;
As Seen
From
Under
Bike &
Backside,
Of Side
Stand**

Step 2:

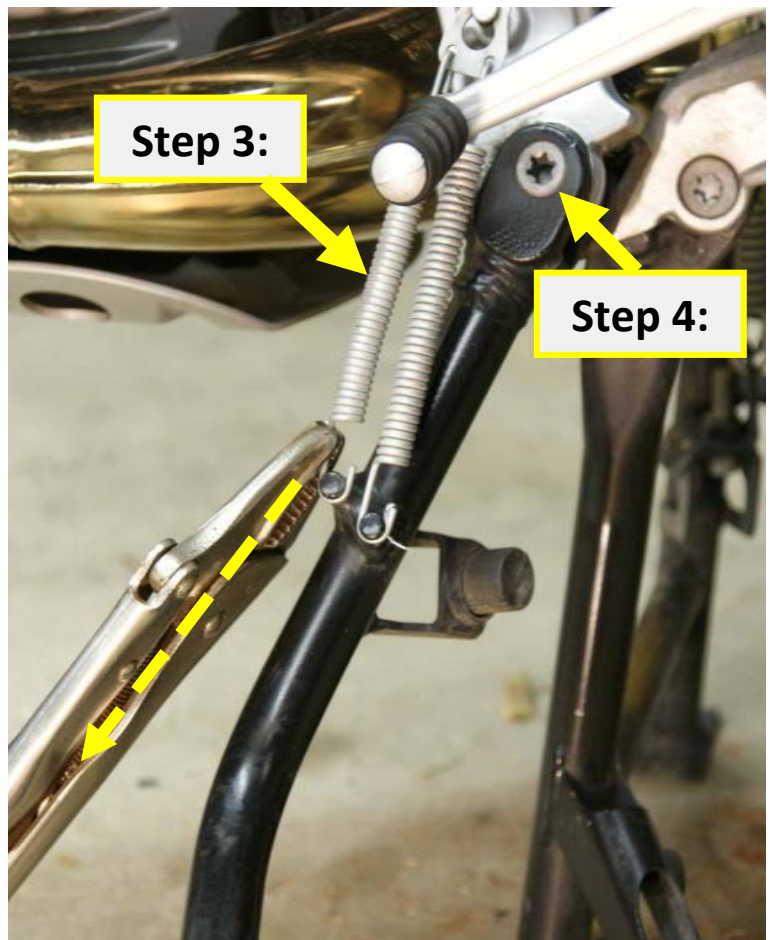


Remove "C" Clip & Washer

Step 3: Remove Both Springs:

TIP:

- Put the Side Stand in the Down Position.
- Firmly Attach Vise Grips to Side of Spring Hook & Pull Downward to Remove.



Step 4:

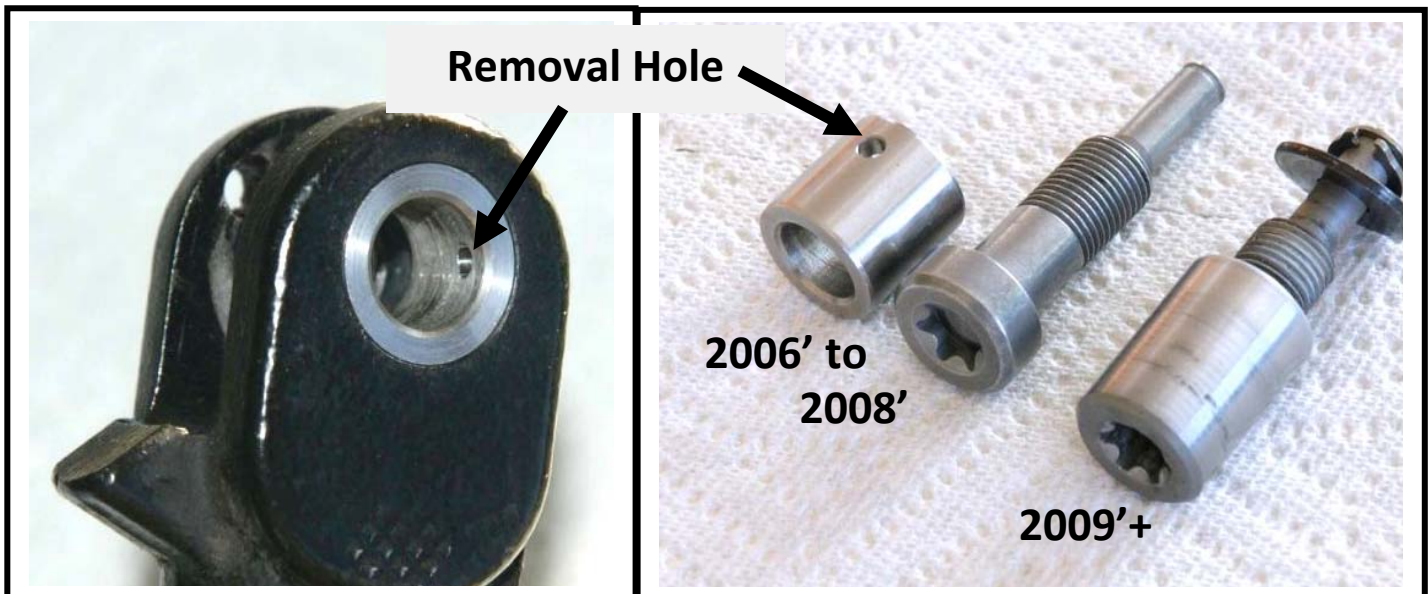
Remove Bolt:

The bolt can now be fully removed. On most 2009 and later models once the bolt is removed the side stand will slide off of the center support and you can go to Step 6.

On most 2008 and earlier models after removal of the bolt, a bushing must then be pulled out before the Side Stand can be removed. If this is the case, go to Step 5.

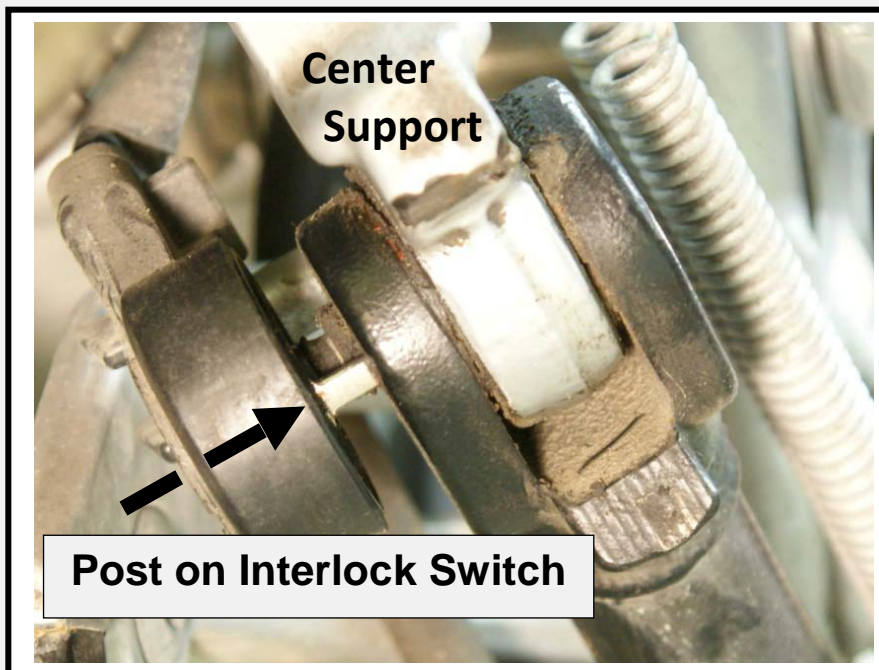
Step 5: Remove Bushing (if equipped):

- There is a small cross drilled “Removal Hole” midway down the bushing. Using a small Allen wrench, or similar tool, hook it into the hole and pull the bushing out.
- Tip: Attach Vise Grips to the end of the Allen wrench and wiggle the side stand as you pull the bushing out.



Step 6: Install ***SIDE KICKER***

1. Wipe and Clean Bushing, Center Support Bushing and Bolt Threads.
2. Apply a light coating of grease to Outer Surface of Bushing and to Bolt Threads.
3. FOR BUSHING DESIGN: Slide ***SIDE KICKER*** on to the Center Support and Install Bushing. TIP: Bushing **MUST** slide into place by hand. If not check for and remove any burrs or nicks. **DO NOT TAP** in with a hammer!



4. Screw in the Bolt about half way. Then slip the Interlock Switch into place making sure the post on the switch is located in the hole on the back side of the Yoke.

Step 6 :(Continued) Install *SIDE KICKER*

5. Tighten Bolt to 40 Nm (30 Ft-lbs).

6. Install both Springs making sure Spring Hooks are seated in grooves.

7. Install Washer(s) and “C” clip.

MAKE SURE “C” CLIP IS PROPERLY LOCATED AND “SNAPS” INTO THE GROOVE LOCATED ON THE BOLT END.

